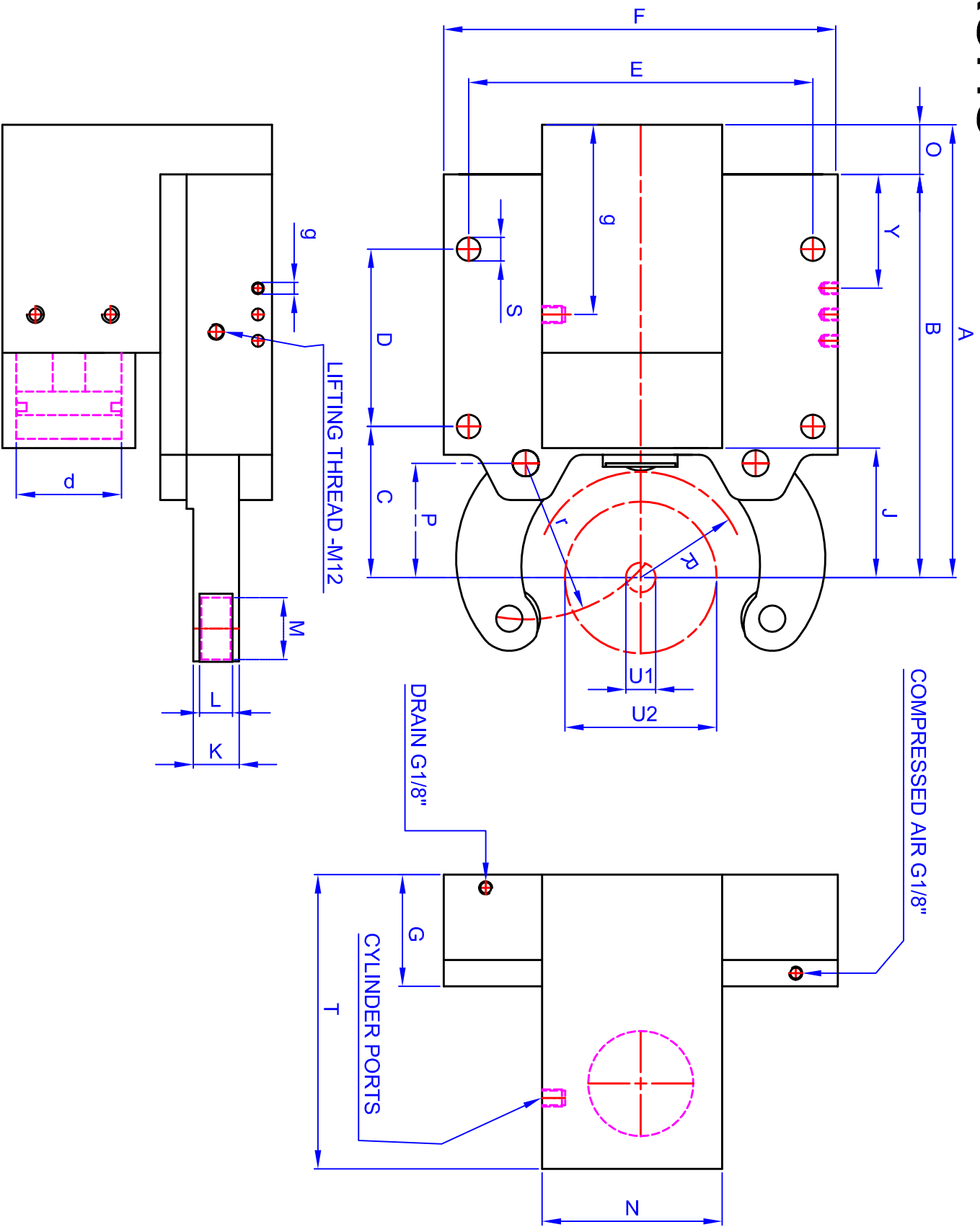


KRSHS



	KRSHS315D	KRSHS315H	KRSHS510	KRSHS521	KRSHS520J	KRSHS520H	
	A	355	367	334	340	469	
	B	331	363	296	340	447	447
	C	138	170	103	133	185	185
	D	135	135	135	135	210	210
	E	266	266	266	288	330	330
	F	300	300	300	315	370	370
	G	80	85	82	89	73	73
	J	108	135	83	110	167,5	167,5
	K	22	45	22	28	22	22
	L	14	25	14	18	14	14
	M	35	47	35	47	35	35
	N	-	-	-	-	-	-
	O	24	1,6	38	-	22	22
	P	108	140	73	110	165,2	165,2
	r	139,2	347,5	115	144	195,5	195,5
	S	M20X 2.5P	18	M20 X 2.5P	18	20	20
	T	205	210,5	206	224	223,5	223,5
	Y	113	113	113	133	145	145
	Clamping ranges without chip guard	U1	40	70	45	54	50
		U2	70	150	110	100	160
Max. axial opening	U	216	163	155	210	270	
Centering range without chip guard	U1	40	70	45	54	50	
	U2	70	150	110	100	160	
Centering range without chip guard	U	216	163	155	210	270	
Eccentric throw (R value)	R	108	135	81,5	86,5	136	
Cylinder bore.	d	50	80	51,2	80	80	
Hyd. Connection (BSP)	e	1/4"	1/4"	1/4"	1/4"	1/4"	
Lubrication ports	g	M8 X 1	M8 X 1	M8 X 1	M8 X 1	M8	
Standard operating pressure	bar	1-35	6-40	1-30	6-40	6-30	
Max. operating pressure	bar	40	45	35	45	30	
Clamping press. / roller at 6 bar	daN	38	80	36	80	1500	
Max. clamping pressure / roller.	daN	250	520	240	520	500	
Centering accuracy over the whole clamping range.	mm	0,04	0,05	0,05	0,05	0,04	
Repeatability	mm	0,01	0,01	0,01	0,01	0,01	
Max. peripheral speed.	m/min	700m/min	715m/min	800m/min	750m/min	700m/min	
Max. peripheral speed at half max. clamping press.	m/min	850m/min	825m/min	950m/min	825m/min	850m/min	
Weight Approx.	kg	45	50	45	55	75	